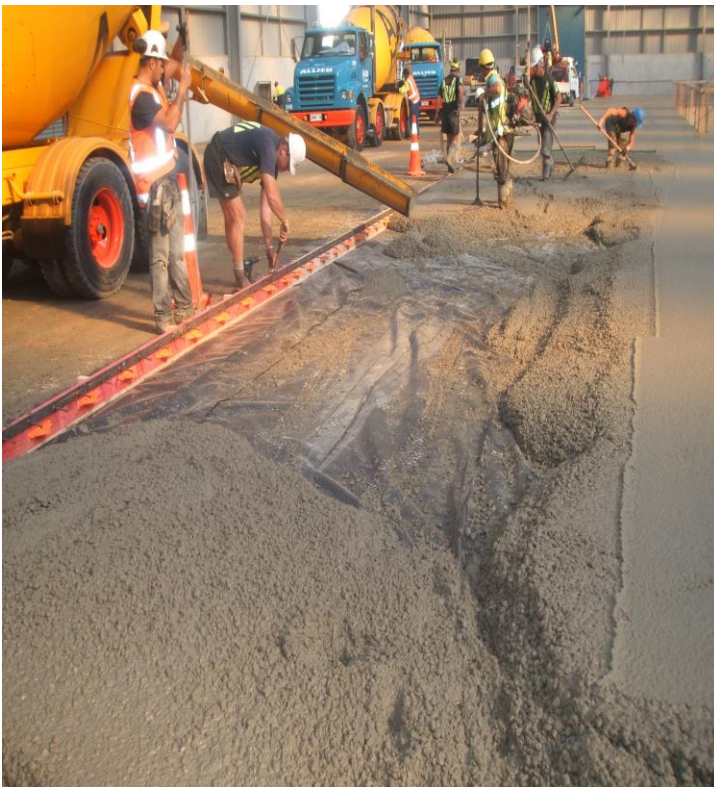




## LESA TYPE A AND B

The **Lesarmour Joint Type A and B System** is used where a large slab is poured in multiple pours. The **Type A** is used on the stop end form work in conjunction with the **Lesarmour Dowel**. The **Type B System** is used as a mono pour joint which is made to suit any slab thickness and incorporates Joint protection, Dowels and a full depth joint system. Both systems come in 3 metre length with the Type B including fixing pins.



Type A (Fixed to timber boxing)



Type B (used in a continuous pour)