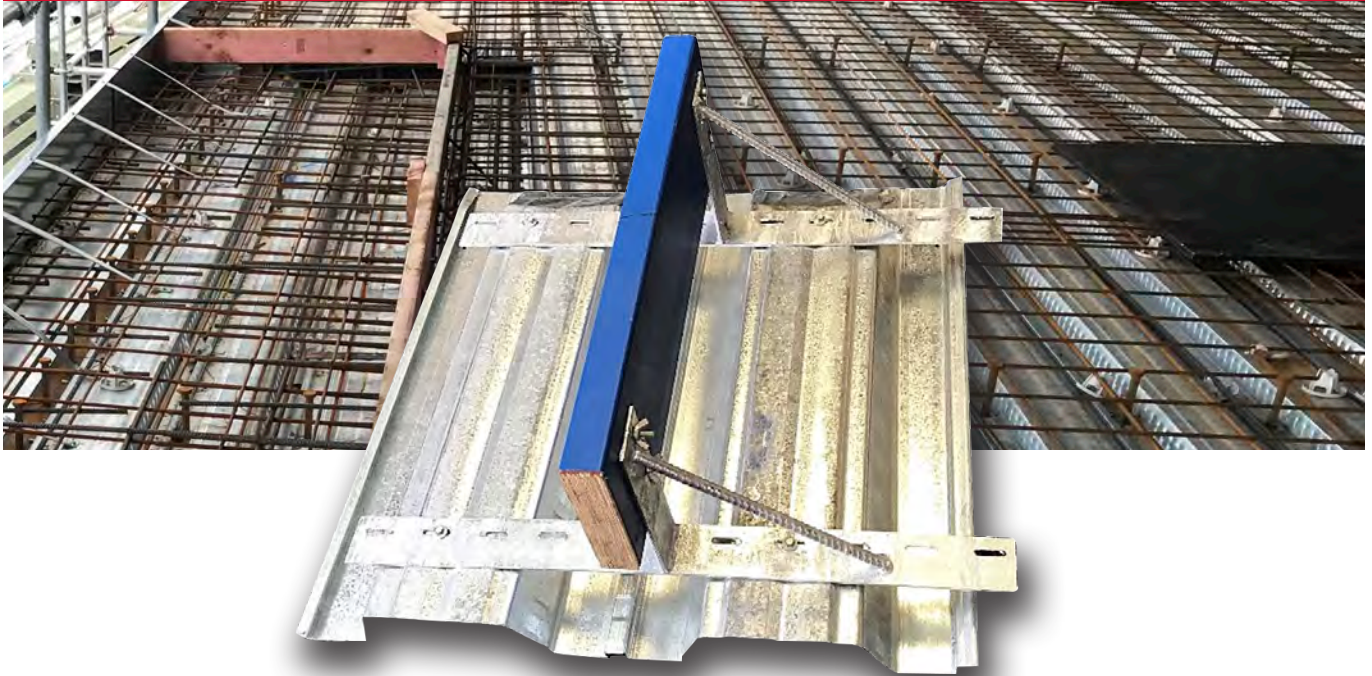


LESA COMPOSITE FLOOR BRACKET SYSTEM

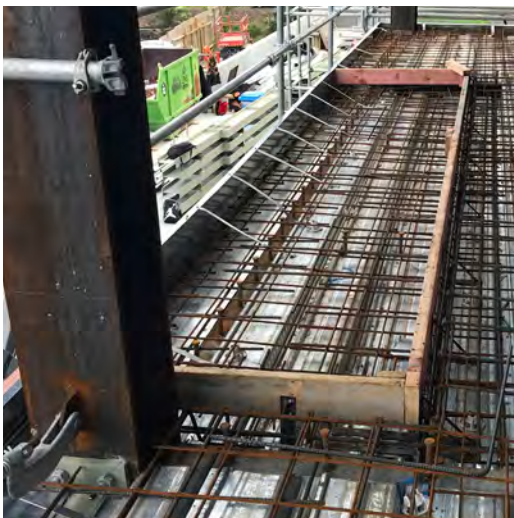


The **LESA Composite Floor Bracket System** was developed to speed up construction when forming set-downs on Comflor and Tray-dec Suspended Composite Flooring Systems. The **LESA Composite Floor Bracket System** is a stay in place galvanised bracket that enables the contractor to achieve a monolithic pour (pouring the set-down area of the slab at the same time as the main slab even though the two slabs are at different elevations).

With this system the time saving and gain in the construction programme is significant.



LESA COMPOSITE FLOOR BRACKET SYSTEM



DIMENSIONS

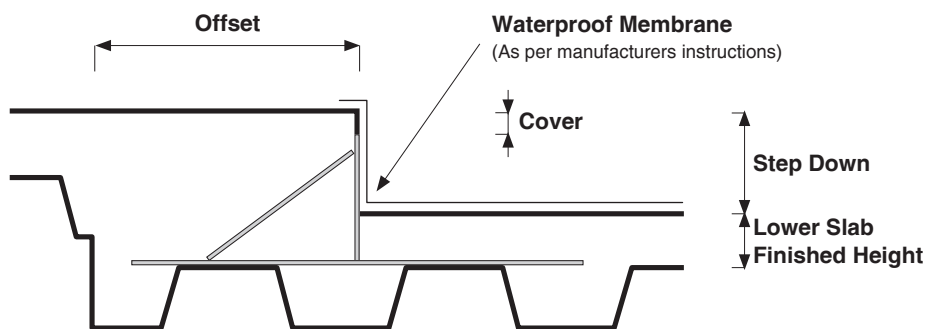
To calculate sizes and number of brackets required.

See Diagram below:

1. **Maximum Foot Length** = Offset x 2
(700mm maximum, minimum 150mm)
2. **Bracket Height** = (Lower Slab Height) + (Step Down) - (Cover)
3. 600mm spacings between brackets recommended
4. Foot Length check: compare with trough spacings.

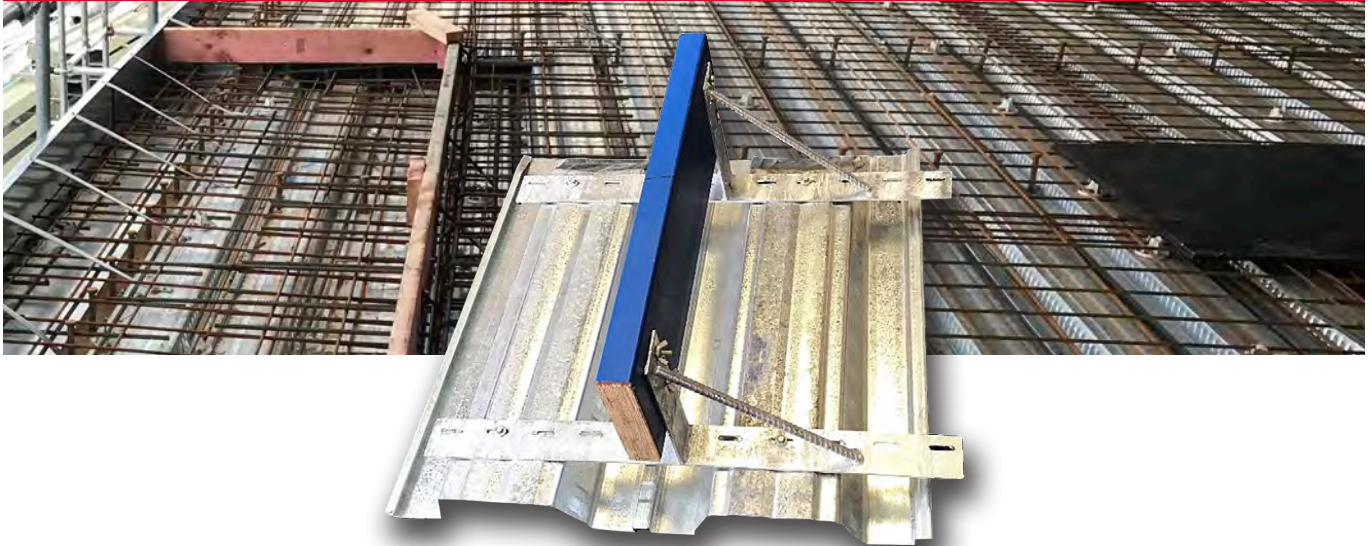
Each bracket comes with the following:

- 2 x self tapping screws 20mm 12G-14 x 20 self drilling screws
- 2 x M6 x 55mm bolts with washers and wingnuts



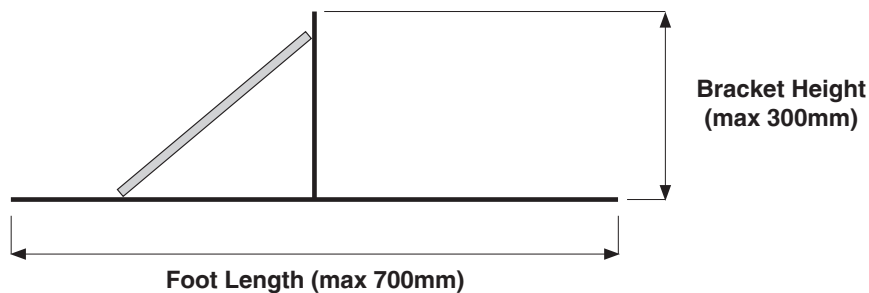
Offset (mm)	Foot Length (mm) Calculated	Lower Slab Finished Height (mm)	Step Down (mm)	Cover (mm)	Bracket Height (mm)	Length of Step Down (metres)	Quantity of Brackets Required (No.) Calculated

LESA COMPOSITE FLOOR BRACKET SYSTEM



SIZING AND PRICE GUIDE

Bracket Height 50-100mm	Foot Length	150-300mm	\$12.50 each
		305-500mm	\$13.50 each
		505-700mm	\$14.50 each
Bracket Height 105-200mm	Foot Length	150-300mm	\$13.00 each
		305-500mm	\$14.00 each
		505-700mm	\$15.00 each
Bracket Height 205-200mm	Foot Length	305-500mm	\$14.50 each
		505-700mm	\$15.50 each



ALL BRACKETS ARE MADE TO ORDER AND LEAD TIMES APPLY.

PRICES ARE CORRECT AS AT 20 JUNE 2018

PRICES ARE EX-FACTORY AND DO NOT INCLUDE GST

ALL SALES SUBJECT TO LESA SYSTEMS 2017 LTD STANDARD TERMS AND CONDITIONS OF TRADE