

# PROTECTING/MAINTAINING YOUR POLISHED CONCRETE FLOOR



The best way to protect/maintain your investment with the Lesa Pentra Floor system is through regular prescribed maintenance.






## CONCRETE MAINTENANCE PADS - DIAMOND BY GORILLA®

Diamond by Gorilla® is a system of floor pads that cleans and polishes concrete, terrazzo and natural stone floors mechanically without the use of chemicals. ETCs Diamond by Gorilla® system consists of floor pads impregnated with billions of microscopic diamonds that will transform any dull, worn floor into a clean, shining floor. The diamonds come in different sizes, creating different levels of aggressiveness ideal for cleaning and polishing. This system can be used on surfaces such as concrete, terrazzo, marble, ceramic and other natural stones as well as VCT when using the 1500 and up polishing pads.

## BENEFITS

- Works on all types of floor machines – wet or dry - including conventional, auto scrubbers and high speed machines
- No dyes added and no colour transfer due to unnatural colouring
- No need for waxes, sealers, strippers or other chemicals
- High-level of quality provided only by ETC
- Take dull floors to a high clean shine
- Easy-to-use
- 40% more durable than competitive pads
- More heat generated
- Quick learning curve
- Save time and money

## CHOOSING THE RIGHT DIAMOND POLISHING PAD

GRADE	APPLICATION
 <b>200 BLUE</b>	<b>Blue Diamond</b> by Gorilla® pad is our most aggressive diamond polishing pad. Perfect for damaged floors or for use after grinding, this pad is designed to remove discolouration and scratches to restore the look of your floors while providing a high-clean shine.
 <b>400 RED</b>	<b>Red Diamond</b> by Gorilla® is slightly less aggressive and is also ideal for damaged floors or for use after grinding, and it produces a matte or satin finish.
 <b>800 WHITE</b>	<b>White Diamond</b> by Gorilla® is perfect for an intermediate step or as a first step in floors that haven't been maintained. This pad cleans surfaces, removes small scratches and leaves a slightly reflective finish.
 <b>1500 YELLOW</b>	<b>Yellow Diamond</b> by Gorilla® is ideal for maintained floors and cleans and prepares them for high polish. This pad can be used as a regular maintenance pad or to remove fine scratches and conditions concrete and stone floors for final polishing.
 <b>3000 GREEN</b>	<b>Green Diamond</b> by Gorilla® is used for daily maintenance, providing and maintaining a wet look shine that restores the appearance of concrete, stone, tile, terrazzo and VCT floors.



Convergent Group, the founding company of the Pentra Flooring System have spent many years perfecting the maintenance programmes for concrete floors, and have focused on providing the best solutions for their densifier and finishing products.

Through regular cleaning with a scrubber, hard nylon brush and the Pentra Cleaning range, a deep and lasting shine can be maintained for years to come. Each time the floor is cleaned, the reaction in the chemical in the top of the concrete is restarted.

## MAINTENANCE PROCEDURE

### DAILY

For all finishing products such as densifiers like Pentra Sil (NL) or Pentra Sil (244+), we recommend using Pentra-Clean (DC) - Daily Cleaner.

On floors with a high-gloss finish (Pentra-Guard HP or Pentra-Finish HG), we recommend using Pentra-Clean (HPC).

Please be aware neither of these products is designed to remove rubber marks and oil.

### 1-2 MONTHS

We recommend performing deep maintenance using Pentra-Clean (CR). This product will function as a deep clean and renovate the surface using its lithium-based detergent. For heavily soiled floors this process will need to be performed more regularly.

### 9-12 MONTHS

Once the floor has taken some wear, it may begin to show visible scratches, and it is then time to reapply Pentra-Guard (HP) to rebuild the top protective layer of the floor. One coat is sufficient unless there is deep scratching. Once Pentra-Guard (HP) has been applied to the floor, it will require a burnish to revive the shine to new.

## QUANTITIES OF CLEANING PRODUCT USED IN THE SCRUBBING MACHINE

PRODUCT	CONTAINER	CONSUMPTION	SQM <sup>2</sup>
Pentra-Clean (DC)	5L Pail	250ml mixed with 25L water	With this total quantity 300-500m <sup>2</sup>
Pentra-Clean (HPC)	5L Pail	250ml mixed with 25L water	With this total quantity 300-500m <sup>2</sup>
Pentra-Clean (CR)	5L Pail	60ml mixed with 25L water	Depending on the level of grime 60-200m <sup>2</sup>
Pentra-Guard (HP)	5L Pail, 25L Pail	Do not mix with water	One coat 30m <sup>2</sup>

# PROTECTING/MAINTAINING YOUR POLISHED CONCRETE FLOOR



## PENTRA-CLEAN (DC)

### DAILY CLEANER

Keep your surfaces looking beautiful with Pentra-Clean® (DC) Daily Cleaner. It is a pH neutral cleaner for use on floors and other hard surfaces where there is water. The unique formula quickly removes soils and greasy messes, yet is completely safe and easy-to-use. Pentra-Clean® (DC) Daily Cleaner contains no ammonia, no acid, and a pH neutral formula. It is safe to use on all types of concrete, terrazzo and natural stone or tiles surfaces.

### KEY BENEFITS

- Deep penetrating and lifting formula helps breakdown and remove stains, dirt, grease and grime
- pH neutral formula does not contain acid, alcohol or ammonia

### USES

#### INTERIOR FLOORING NON-POROUS GROUND, HONED, POLISHED OR BURNISHED CONCRETE SURFACES

**Commercial:** Grocery stores, office building, retail, banks, malls, warehouses, distribution centres. **Industrial:** Food processing facilities, cold storage/freezers, beverage and manufacturing plants. **Institutional:** Churches, hospitals, universities, schools, museums. **Theme and Leisure:** Resorts, hotels, casinos, restaurants, theatres. **Governmental:** Federal and state buildings, prisons. **Residential:** Concrete floors and garages.

### APPLICATION

Before application, always do a small test sample in a less-visible area to be sure there are no variables or contaminants in the substrate that may be incompatible with this product.

**IMPORTANT NOTE:** Daily cleaning and periodic deep cleaning are recommended to prolong the life of your surface. Improper methods and products used for daily and periodic deep cleaning are probably the leading causes of damage to commercial hardwood floors. Avoid water, all-purpose cleaners and harsh chemicals (which can damage the wood or dull the finish). Also, don't use dust mop treatments, oil soaps, silicone and acrylics which can leave a residue and adversely affect the adhesion of a coat of finish in the future.



## PENTRA-CLEAN HPC

### HIGH POLISH CLEANER

Pentra-Clean® (HPC) is a mild but effective cleaner designed for high-quality polished floors. This new, environmentally-friendly product is based on innovative surfactant chemistry and cleans and polishes in a straightforward operation. When used for cleaning polished concrete surfaces, the material will provide additional lustre with regular cleaning cycles. This material will not harm the exposed concrete flooring finish or any surrounding surfaces. Pentra-Clean® (HPC) gives off a mild, pleasant odour. Pentra-Clean® (HPC) reduces labour and maintenance costs while improving the appearance of the surface.

### KEY BENEFITS

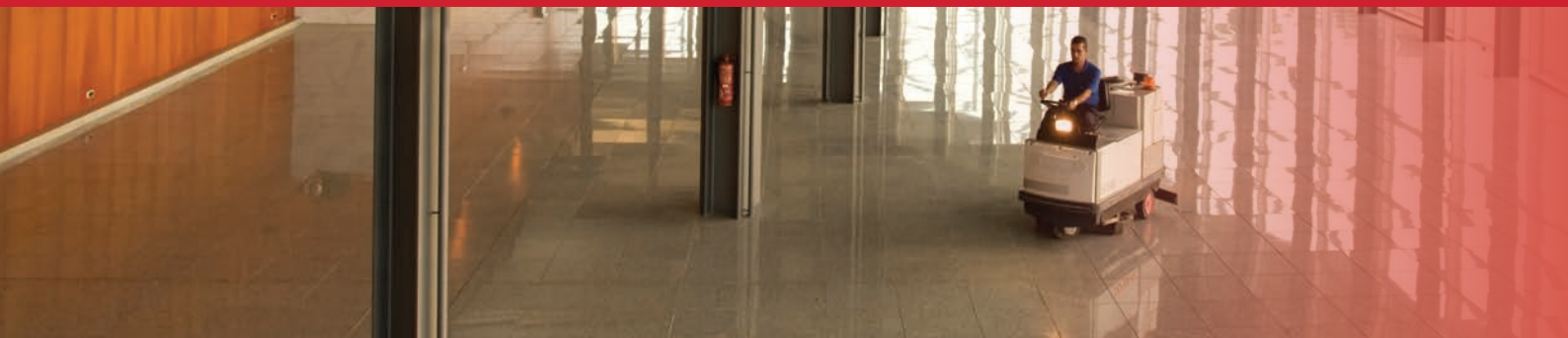
- Highly concentrated
- No harsh chemicals
- Environmentally friendly
- Safe for all floors
- Low VOC
- Biodegradable

### USES

Pentra-Clean® (HPC) is ideal for use on polished concrete floors, non-porous highly polished surfaces, finished stone, Terrazzo (1500 grit profiles and above).

### APPLICATION

We recommend testing the product on a small area of the intended floor to determine the suitability and desired results. Let the surface dry before inspecting, testing and approving the desired application.



## PENTRA-CLEAN (CR)

### DAILY CLEANER

Pentra-Clean® (CR) penetrates and embeds the substrate with reactive, internally cross-linked Nano-Lithium polymers and a blend of detergents that help harden and protect the surface. Unlike any other cleaner, it provides unmatched clarity as it lifts and cuts through dirt and embedded residue. Additionally, this product enhances and restores dulled and dirty floors, setting it apart from conventional cleaners.

### KEY BENEFITS

- Quickly and effortlessly removes dirt and other surface soils.
- Reduces the need for periodic buffing or burnishing.
- Helps resist scuffing, scratching, water spots, and black heel marks.
- Amplifies overall gloss and clarity with Nano-Lithium polymer technology.
- Leaves no residue that will dull or damage a floor or finish.
- Certified by the National Floor Safety Institute (NSFI) as “High Traction” under ANSI B101.1 Wet Test.
- Pleasant lemon fragrance

### USES

Sweep or vacuum to remove loose materials from the surface to be cleaned. Pre-clean oil spots or other deep stains with the appropriate cleaner.

### APPLICATION

Application instructions: Before use, read “Preparation” and “Safety Information”. Always test for the suitability, dilution rates and desired results before application. Test using the following application instructions. Let the surface dry thoroughly before the inspection. Equipment: This product is concentrated for use with an automatic floor scrubber. Use soft brushes/soft pads. Never use aggressive brushes or pads on polished concrete. Dilute 100ml of product 50 litres of freshwater or add 100mls to the automatic floor scrubber water tank.

1. Apply with an automatic scrubber.
2. Routine Cleaning: Scrub the floor with squeegee down and vacuum/squeegee engaged. Remove cleaning residue. Deep Cleaning—Double scrub: Apply cleaner and scrub floor with brushes-pads engaged, but vacuum up. Allow product to dwell on surface without drying for 15 to 20 minutes, then scrub again with the brushes on and vacuum/squeegee engaged. Add more cleaner as necessary.
3. Buff the cleaned floor with a white pad to increase shine.

# Maintenance Program

A simple concrete floor that is cleaned regularly with a scrubber machine and hard nylon brush will give you a great protected, shiny floor after a few weeks. Each time you clean, you restart the chemical reaction on the top of the concrete by closing more and more of the pores of the concrete.

In general we can divide the concrete floor in different groups where our products are used:

- **Group 1:** Grocery Stores, Shopping Centres, Show Rooms, Airports, Colleges, etc.
- **Group 2:** Aviation, Pharmaceutical Factories, Car Factories, Garages, Parking Lots, etc.
- **Group 3:** Warehouses
- **Group 4:** Heavy Industries

**Group 1** clean generally each day and for all finishing products (densifier like Pentra Sil (NL) or 244+ or another densifier, but also for floor finishes with high shine like Pentra Guard or Finish. We recommend to use the Pentra-Clean (DC) Daily Cleaner.

On a floor finish with Pentra-Guard (HP) or Pentra-Finish (HG) we recommend to use Pentra-Clean (HPC). Always test before and decide what's best for your floor.

**Group 2** cleans stains like oil, or different spots immediately.

**Group 3** uses the same process, but they do not clean generally each day, but one time a week or one time a month and a lot of rubber marks, oil, etc.

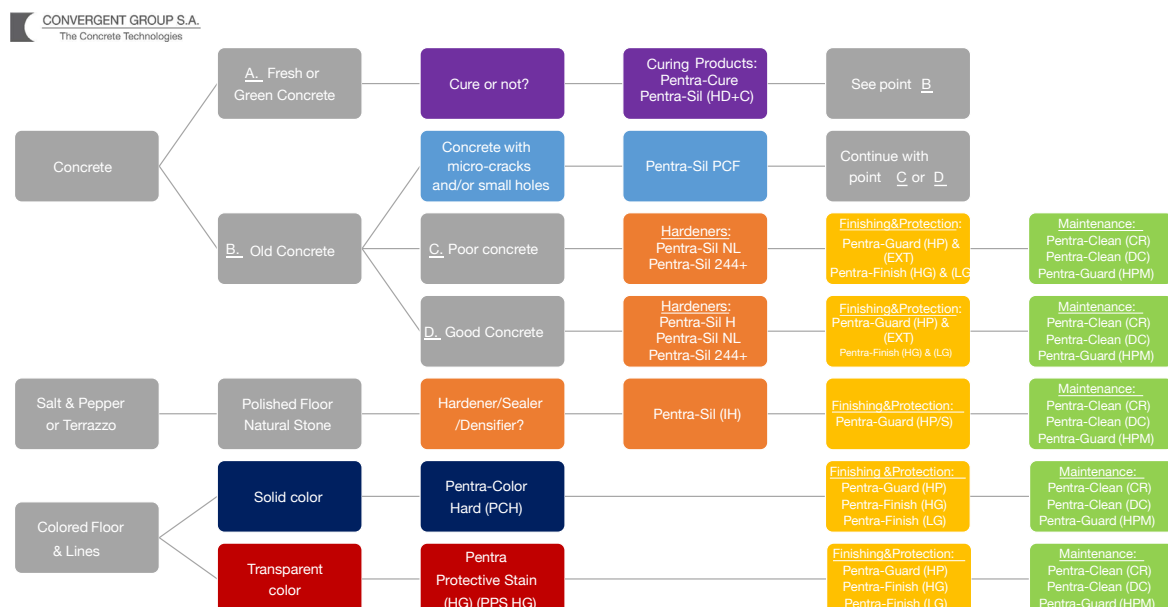
If the floor is dirty, make a first cleaning process with our Pentra-Clean® (DC) and after this clean with our Pentra-Clean® (CR). The best is to clean each week with the Pentra Clean (CR)

Most of the time, those warehouses are treated with Pentra-Sil® (NL) or 244+. If the floor is treated with Pentra-Guard® or Pentra-Finish® products, you can also use the same process as the Group 2.

**Group 4** is the same as the Group 3, but if you want to get a nice factory, clean each day or week with Pentra-Clean® (CR).

The total of this advice is a summary of the various notices of our distributors.

NB: On a high polish floor never use aggressive pad or brushes!





# How To Apply Pentra (CR)

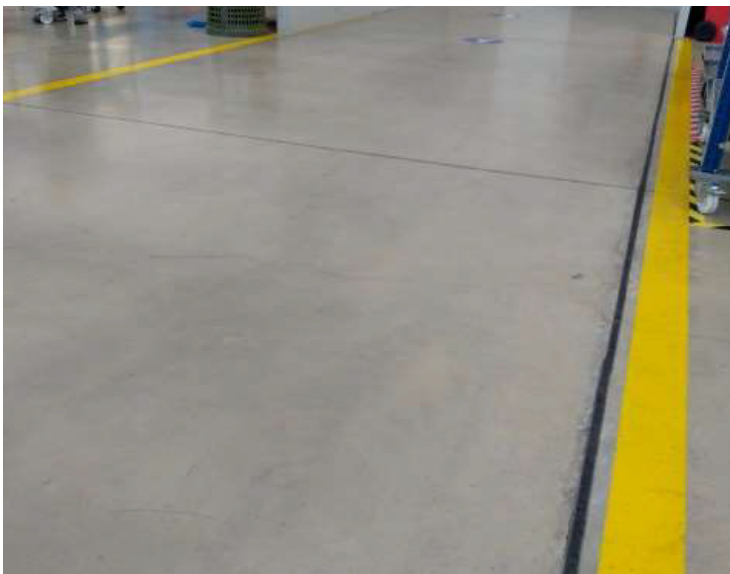
First Distribution Of The Product  
(Clean CR)



Start Cleaning



Result



# Revitalization Of Existing Polished Concrete Floors

Convergent Group S.A

Samples: IKEA Zaventem



Phone: 0800 74LESA  
Email: [info@lesasystems.co.nz](mailto:info@lesasystems.co.nz)  
Website: [www.lesasystems.co.nz](http://www.lesasystems.co.nz)

**LESA**  
SYSTEMS  
ENGINEERED CONCRETE FLOOR SYSTEMS



**CONVERGENT GROUP S.A.**

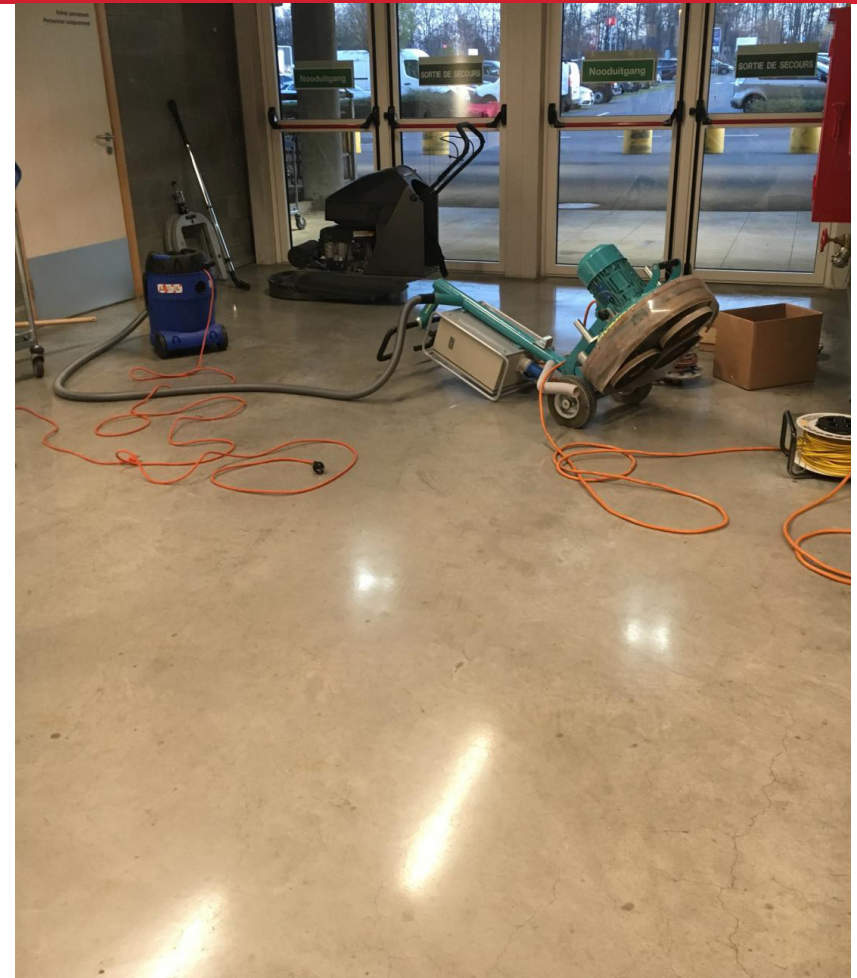
The Concrete Technologies

# Introduction

Final Customer: IKEA Zaventem  
Producer: Convergent Group S.A.

Realization of 2 samples (20m<sup>2</sup> & 4m<sup>2</sup>) in the Ikea of Zaventem (Belgium)

- 16 year old concrete with dry shake
- Micro cracks
- Macro cracks
- Micro & Macro holes
- Incrusted dirt
- Total surface to repair: + 11,000 m<sup>2</sup>



Phone: 0800 74LESA  
Email: [info@lesasystems.co.nz](mailto:info@lesasystems.co.nz)  
Website: [www.lesasystems.co.nz](http://www.lesasystems.co.nz)

**LESA**  
SYSTEMS  
ENGINEERED CONCRETE FLOOR SYSTEMS



**CONVERGENT GROUP S.A.**  
The Concrete Technologies



# Step 1.

- Grinding with metal diamonds - Grit 60/80
- Very light sprinkling with water. Just some drops in order to create an adhesion between the concrete and the diamond
- 2 Weights (ballasting) on the grinding machine
- 500 RPM

Phone: 0800 74LESA  
Email: [info@lesasystems.co.nz](mailto:info@lesasystems.co.nz)  
Website: [www.lesasystems.co.nz](http://www.lesasystems.co.nz)

**LESA**  
SYSTEMS  
ENGINEERED CONCRETE FLOOR SYSTEMS



**CONVERGENT GROUP S.A.**  
The Concrete Technologies

# Step 1 Continued..



Phone: 0800 74LESA  
Email: [info@lesasystems.co.nz](mailto:info@lesasystems.co.nz)  
Website: [www.lesasystems.co.nz](http://www.lesasystems.co.nz)

**LESA**  
SYSTEMS  
ENGINEERED CONCRETE FLOOR SYSTEMS



**CONVERGENT GROUP S.A.**  
The Concrete Technologies

## Step 2.

- Grinding with resin diamonds - Grit 50
- Very light sprinkling with water. Just some drops in order to create an adhesion between the concrete and the diamond
- 1 Weights (ballasting) on the grinding machine
- First step at 450 RPM, Second step at 700 RPM



Phone: 0800 74LESA  
Email: [info@lesasystems.co.nz](mailto:info@lesasystems.co.nz)  
Website: [www.lesasystems.co.nz](http://www.lesasystems.co.nz)

**LESA**  
SYSTEMS  
ENGINEERED CONCRETE FLOOR SYSTEMS



**CONVERGENT GROUP S.A.**

The Concrete Technologies

## Step 3.

- Corners and edges of the sample: manual grinding
- Pad Resin 50
- Without Water
- 2000 RPM

Phone: 0800 74LESA  
Email: [info@lesasystems.co.nz](mailto:info@lesasystems.co.nz)  
Website: [www.lesasystems.co.nz](http://www.lesasystems.co.nz)

**LESA**  
SYSTEMS  
ENGINEERED CONCRETE FLOOR SYSTEMS

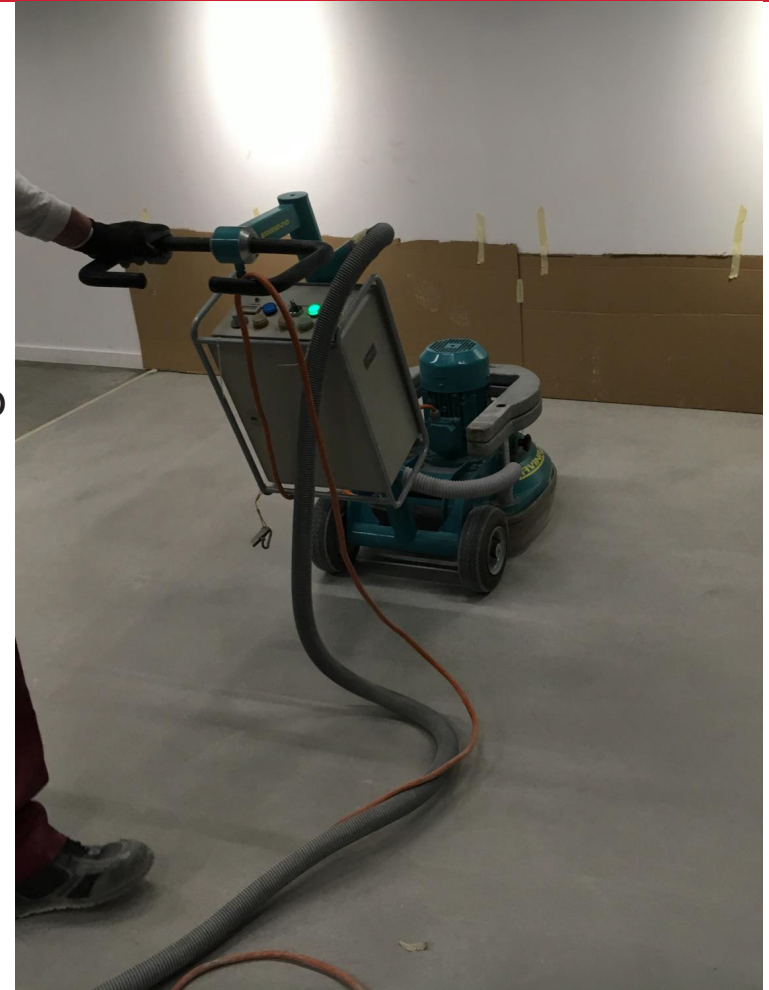


**CONVERGENT GROUP S.A.**  
The Concrete Technologies



# Step 4.

- Grinding with resin diamonds – Grit 100
- Very light sprinkling with water. Just some drops in order to create an adhesion between the concrete and the diamond
- 1 weight (ballasting) on the grinding machine
- 350 RPM



Phone: 0800 74LESA  
Email: [info@lesasystems.co.nz](mailto:info@lesasystems.co.nz)  
Website: [www.lesasystems.co.nz](http://www.lesasystems.co.nz)

**LESA**  
SYSTEMS  
ENGINEERED CONCRETE FLOOR SYSTEMS



**CONVERGENT GROUP S.A.**

The Concrete Technologies



# Step 5.

- With the flex, grinding of the places where a reparation was needed.
- Resin pad Grit 100
- High speed (+/- 2000 RPM)



Phone: 0800 74LESA  
Email: [info@lesasystems.co.nz](mailto:info@lesasystems.co.nz)  
Website: [www.lesasystems.co.nz](http://www.lesasystems.co.nz)

**LESA**  
SYSTEMS  
ENGINEERED CONCRETE FLOOR SYSTEMS

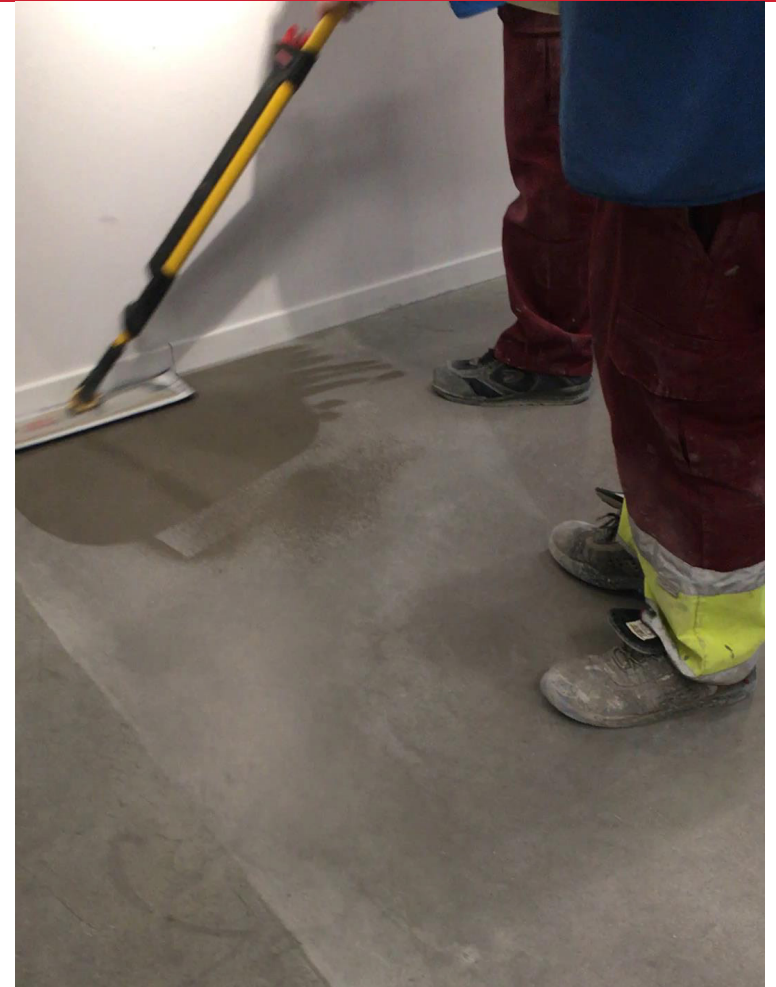


**CONVERGENT GROUP S.A.**  
The Concrete Technologies

# Step 6.

After a soft cleaning of the floor:

- Application of Pentra-Sil (NL)
- One coat with a sprayer & microfiber cloth



Phone: 0800 74LESA  
Email: [info@lesasystems.co.nz](mailto:info@lesasystems.co.nz)  
Website: [www.lesasystems.co.nz](http://www.lesasystems.co.nz)

**LESA**  
SYSTEMS  
ENGINEERED CONCRETE FLOOR SYSTEMS



**CONVERGENT GROUP S.A.**  
The Concrete Technologies



Phone: 0800 74LESA  
Email: [info@lesasystems.co.nz](mailto:info@lesasystems.co.nz)  
Website: [www.lesasystems.co.nz](http://www.lesasystems.co.nz)

**LESA**  
SYSTEMS  
ENGINEERED CONCRETE FLOOR SYSTEMS



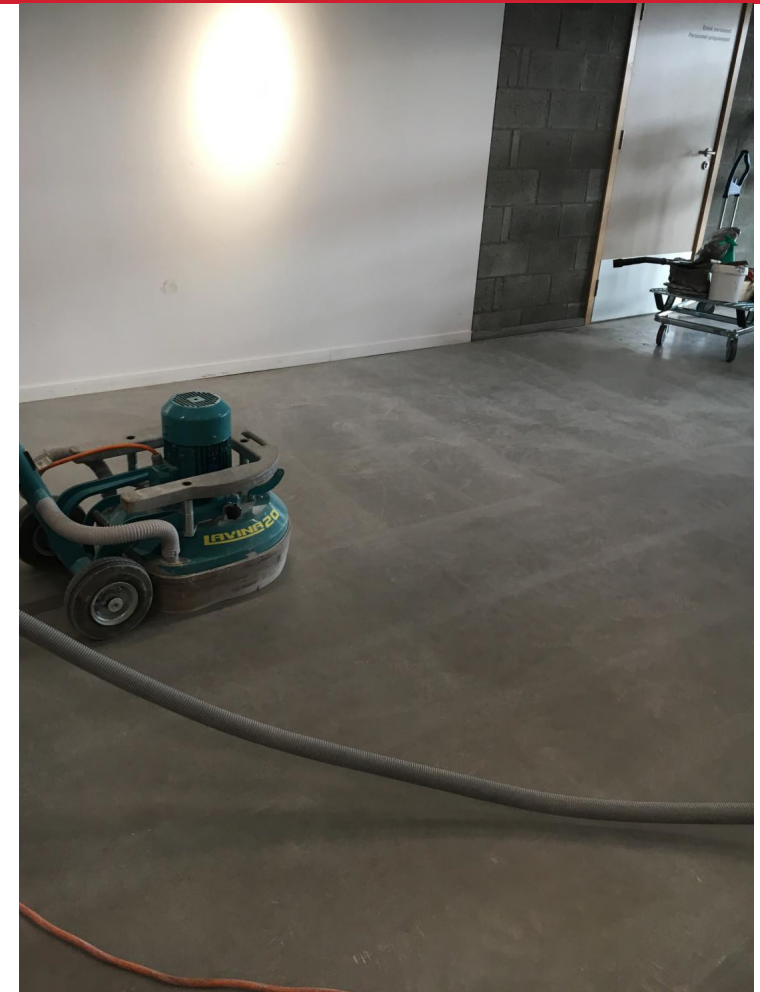
**CONVERGENT GROUP S.A.**  
The Concrete Technologies

# Step 7.

- Grinding with resin diamonds Grit :
  - 200
  - 400
  - 800
- Minimum 500 RPM
- Without water or just several drops

Phone: 0800 74LESA  
Email: [info@lesasystems.co.nz](mailto:info@lesasystems.co.nz)  
Website: [www.lesasystems.co.nz](http://www.lesasystems.co.nz)

**LESA**  
SYSTEMS  
ENGINEERED CONCRETE FLOOR SYSTEMS



**CONVERGENT GROUP S.A.**  
The Concrete Technologies

# Step 8.

Application of Pentra-Sil (244+)

Same application process as Pentra-Sil (NL)



**Pentra-Sil® (244+)**  
Salt Protection and Dust Proofer,  
Hardener, Densifier, Sealer

Phone: 0800 74LESA  
Email: [info@lesasystems.co.nz](mailto:info@lesasystems.co.nz)  
Website: [www.lesasystems.co.nz](http://www.lesasystems.co.nz)

**LESA**  
SYSTEMS  
ENGINEERED CONCRETE FLOOR SYSTEMS

**CONVERGENT GROUP S.A.**  
The Concrete Technologies



# Step 9.

- Burnish with a PAD Grit 800
- Burnish with a PAD Grit 3000

End.

Phone: 0800 74LESA  
Email: [info@lesasystems.co.nz](mailto:info@lesasystems.co.nz)  
Website: [www.lesasystems.co.nz](http://www.lesasystems.co.nz)

**LESA**  
SYSTEMS  
ENGINEERED CONCRETE FLOOR SYSTEMS



**CONVERGENT GROUP S.A.**  
The Concrete Technologies



Phone: 0800 74LESA  
Email: [info@lesasystems.co.nz](mailto:info@lesasystems.co.nz)  
Website: [www.lesasystems.co.nz](http://www.lesasystems.co.nz)

**LESA**  
SYSTEMS  
ENGINEERED CONCRETE FLOOR SYSTEMS



**CONVERGENT GROUP S.A.**  
The Concrete Technologies



Phone: 0800 74LESA  
Email: [info@lesasystems.co.nz](mailto:info@lesasystems.co.nz)  
Website: [www.lesasystems.co.nz](http://www.lesasystems.co.nz)

**LESA**  
SYSTEMS  
ENGINEERED CONCRETE FLOOR SYSTEMS



**CONVERGENT GROUP S.A.**  
The Concrete Technologies